

Determination of thermodynamic acidity constants of phosphocreatine and its rate constants of hydrolysis reaction by pressure-assisted capillary zone electrophoresis.

Lifeng Chen^{1,2*}

¹Laboratory of Pharmaceutical Analysis, Shanghai Institute of Materia Medica, Chinese Academy of Sciences, 555 Zuchongzhi Road, Zhangjiang Hi-Tech Park, Shanghai, PR China

²University of Chinese Academy of Sciences, No.19A Yuquan Road, Beijing, PR China

Abstract

Purpose: A pressure-assisted capillary zone electrophoresis method (pCE) was developed to determine the thermodynamic acidity constants (pK_a) of phosphocreatine and rate constant of its hydrolysis reaction under acidic conditions.

Materials and methods: Performed in an uncoated fused-silica capillary under separation voltage of 18 kV and 50 mbar of external pressure applied simultaneously.

Results: The running temperature was controlled at 25°C. The thermodynamic pK_a values were calculated using the effective mobility (μ_{eff}) of the analyte against pH values of Background Electrolytes (BGEs) ranging from 1.7 to 12.1 with constant ionic strength of 25 mM. The hydrolysis kinetic studies under acidic conditions were conducted and the corresponding rate constants obtained with the pH range of between 2.0 to 7.0.

Conclusions: It could be found that the pCE method was convenient and more applicable to accurately determine the pK_a values with degradant coexisted.

Keywords: Capillary zone electrophoresis, Pressure-assisted, pK_a , Hydrolysis kinetics, Phosphocreatine.

Accepted on August 28, 2017

Introduction

It was estimated that 95 percent of drug molecules have at least one ionizable group [1]. The acid dissociation constant, usually expressed as pK_a , is a key parameter to describe ionization properties of the molecular [2]. Usually, the ionized form is water soluble, while the neutral form is more lipophilic with higher membrane permeability. Thus, the properties of solubility, lipophilicity and permeability are pK_a -dependent and the knowledge of pK_a is important for understanding the behaviors of the Absorption, Distribution, Metabolism and Excretion (ADME) for the drugs *in vivo* [3].

It is generally regarded that potentiometric method is a “golden” standard method for pK_a value determination which is calculated from the change in the shape of the titration curve monitored by a pH electrode [4-6]. However, it suffers several drawbacks, such as being time consuming, requiring relatively large amounts of pure and stable substances. In last decades, Capillary Zone Electrophoresis (CE) has been developed as an attractive method for pK_a determination [7-10]. The method relies on the measurements of effective mobility (μ_{eff}) of an ionizable analyte in a series of Background Electrolyte (BGE) buffer solutions with variable pH at a constant Ionic strength (I) and the pK_a value(s) of the analyte can then be obtained by

fitting the μ_{eff} against the pH value of BGE buffer solution. Compared with that of the standard potentiometric method, CE method offers several advantages, such as it requires a negligible consumption of the analyte at low concentration, only migration times are needed for the calibration, possible impurities do not disturb the precise of the measurements. Thus, CE method is an efficient trouble-shooting method for pK_a values determination for the drug compounds with the difficulties of quantity supply or impurities coexisted which are originated from synthesis process or degradation reaction during the analytical process. Since there is still a major problem for CE determination at low pH buffer (pH<4) as Electroosmotic Flow (EOF) is diminished, external pressure-assisted CE (pCE) has been developed for its generic screening purpose [11-14].

Phosphocreatine sodium has been applied as pharmacological myocardial protection in cardiovascular surgery, which would be in the form of phosphocreatine (PC, Figure 1a) *in vivo* to serve as an energy supplier, stabilize cellular membranes and decrease the production of lysophosphoglycerides in hypoxic hearts [15,16]. The pK_a values of PC have been reported from different laboratories using potentiometric titration with some differences from each other [17-19]. Since the hydrolysis degradation reaction would occur under the acid conditions

with pH lower than 5 [17], it could be assumed the coexisted degradants would propose the challenge for the reproducible pK_a values from laboratory to laboratory. In this work, a pressure-assisted capillary zone electrophoresis (pCE) was developed to overcome the challenge. Furthermore, kinetics studies were conducted using the pCE method to assess the influencing effects of the pK_a measurements due to the hydrolytic degradation occurring under the pH range of 2.0 to 7.0 with the ionic strength controlled at 25 mM.

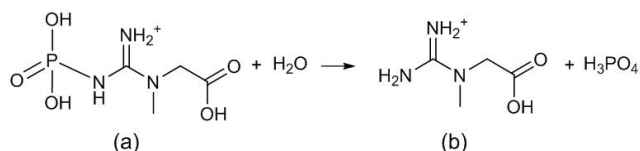


Figure 1. The chemical structures of (a) phosphocreatine (PC) and (b) Creatine.

Experimental Material and Methods

Phosphocreatine sodium, sodium hydroxide, sodium chloride, acetic acid, tris (hydroxymethyl) aminomethane (Tris), boric acid, phosphoric acid, formic acid, quinine sulfate and Dimethyl Sulfoxide (DMSO) were of analytical reagent grade supplied by Sinopharm Chemical Reagent Co., Ltd. (Shanghai, China). 3-(Cyclohexylamino)-1-Propanesulfonic Acid (CAPS) was obtained from J&K Scientific Ltd. (Beijing, China). Creatine was obtained from National Institutes for Food and Drug Control of China (Beijing, China). Water was purified by a Milli-Q plus system Millipore AS (Bedford, MA, USA) with a resistivity of 18.2 M Ω cm.

For pK_a determination, 4 mM PC solution was freshly prepared in water with DMSO added as an EOF marker with its concentration controlled at 0.1% (v/v). The pCE methods were performed using the BGEs with the pH ranging from 1.7 to 12.1 with the ionic strength controlled at 25 mM which were prepared by mixing stock solutions as described in Table 1. All the measurements were performed in triplicate.

For the kinetic studies of hydrolytic degradation, 4 mM PC solutions added with 0.2 mM quinine as an internal standard for the quantitative calibration were prepared in the buffer solutions as described in Table 1 with the pH ranging between 2.0 to 7.0 and the same ionic strength as that for pK_a determination. The hydrolytic degradation of PC was monitored at different time intervals using the pCE method with 25 mM phosphate buffer solution (pH 7.5) as the running BGE. 10 mM creatine standard solution was prepared in water to verify the corresponding degradation product of the hydrolysis reaction.

Instrumentation

The CE measurements were operated on an Agilent CE 1600A (Agilent Technologies, Waldbronn, Germany) equipped with a diode array UV/Vis detector (DAD) and the wavelength 210 nm. An uncoated fused-silica capillary column (Yongnian Optical Fiber Corporation, Hebei, China) of 50 μ m (I.D.) \times 375 μ m (O.D.) with 30 cm total length and 21.5 cm effective length

was used for the determination. Before the first use, the capillary was rinsed with 0.1 M sodium hydroxide for 20 min, followed by water for 20 min. Sample injections were operated in hydrodynamic mode at 50 mbar. The capillary was rinsed under 940 mbar pressure with 0.1 M NaOH for 3 min, water for 2 min and BGE for 5 min, successively. Between two times of running, the capillary was washed with 0.1 M NaOH for 2 min, water for 2 min and equilibrated by flushing with the running electrolyte for 5 min. The background electrolyte was replaced every 10 runs. The separation voltage of 18 kV was applied with the electric current ranged between 17 to 40 μ A, simultaneously added with 50 mbar of external pressure upon the capillary.

Julabo F40-HC refrigerated and heating circulator (Julabo Inc., Seelbach, Germany) was used to control the temperature for the kinetic hydrolysis reaction studies. The pH values of the BGEs and the buffer solutions were measured using a Sartorius PB-10 pH meter (Beijing, China) at 25°C with the stability of the pH value being confirmed. The values of pK_a and k_{obsd} of the analyte were calculated with the aid of the Origin software (version 8.0, Northampton, MA, USA).

Results and Discussion

Optimization of operation parameters in pCE experiments

In acidic running conditions (pH<4), the internal surface of the fused-silica capillary is neutral or weakly negatively charged. The Electroosmotic Flow (EOF) would be decreased with the decreasing pH of BGE buffer, thus causing long migration time for DMSO, the indicator of EOF and the analyte of PC, as well. In order to shorten the migration time and mitigate the degree of hydrolysis of the analyte of PC under acidic conditions, it was found that external pressure was helpful to overcome the concerned problems. The peak shapes were not affected by the pressure-induced parabolic flow and the external pressure of 50 mbar was optimal for the balance between the separation profile and the peak resolution. In this study, the analysis time for a single electrophoretic operation was less than 5 min.

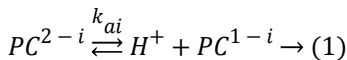
As ideal electrophoretic running buffer concentration is a compromise between buffering capacity and Joule heating. In this study, ionic strength was controlled at 25 mM for the running buffer solutions. Ohm's law was verified with linear relationships between current and voltage and there was no excessive Joule heating generated during the electrophoresis process.

Since the hydrolytic degradation occur under acidic running conditions, the signal response of the analyte of PC would decrease. In order to make sure the signal of the analyte of PC could be detected at all running pH conditions, the injection time was accordingly optimized based on the different pH of the running BGEs, with 6 s under pH<6.0 and 3 s under pH>6.0, respectively.

Determination of thermodynamic acidity constants of phosphocreatine and its rate constants of hydrolysis reaction by pressure-assisted capillary zone electrophoresis

Determination of pK_a values by the pCE method

For this triacidic monobasic compound, each dissociation step can be described as Equation 1, $i=1, 2, 3, 4$, respectively.



The mixed dissociation constants (K_{ai}^{mix}) [20-22] are given as Equation 2

$$K_{ai}^{mix} = \frac{\gamma_{H^+} [H^+] [PC^{1-i}]}{[PC^{2-i}]} \rightarrow (2)$$

In this pCE experiments, the mixed pK_a values can be calculated by analyzing the electrophoretic mobility (μ_{eff}) of the analyte against the different pH values of BGE [23], described as Equation 3.

$$\mu_{PC^+} [10^{-pH}]^4 + \mu_{PC^-} 10^{-pk_{a1}^{mix}} 10^{-pk_{a2}^{mix}} [10^{-pH}]^2 + \mu_{PC^{2-}} 10^{-pk_{a1}^{mix}} 10^{-pk_{a2}^{mix}} 10^{-pk_{a3}^{mix}} 10^{-pH} + \mu_{PC^{3-}} 10^{-pk_{a1}^{mix}} 10^{-pk_{a2}^{mix}} 10^{-pk_{a3}^{mix}} 10^{-pk_{a4}^{mix}} [10^{-pH}]^4 + 10^{-pk_{a1}^{mix}} [10^{-pH}]^3 + 10^{-pk_{a1}^{mix}} 10^{-pk_{a2}^{mix}} [10^{-pH}]^2 + 10^{-pk_{a1}^{mix}} 10^{-pk_{a2}^{mix}} 10^{-pk_{a3}^{mix}} 10^{-pH} + 10^{-pk_{a1}^{mix}} 10^{-pk_{a2}^{mix}} 10^{-pk_{a3}^{mix}} 10^{-pk_{a4}^{mix}}$$

$$\mu_{eff} = \frac{\mu_{PC^+} [10^{-pH}]^4 + \mu_{PC^-} 10^{-pk_{a1}^{mix}} 10^{-pk_{a2}^{mix}} [10^{-pH}]^2 + \mu_{PC^{2-}} 10^{-pk_{a1}^{mix}} 10^{-pk_{a2}^{mix}} 10^{-pk_{a3}^{mix}} 10^{-pH} + \mu_{PC^{3-}} 10^{-pk_{a1}^{mix}} 10^{-pk_{a2}^{mix}} 10^{-pk_{a3}^{mix}} 10^{-pk_{a4}^{mix}}}{[10^{-pH}]^4 + 10^{-pk_{a1}^{mix}} [10^{-pH}]^3 + 10^{-pk_{a1}^{mix}} 10^{-pk_{a2}^{mix}} [10^{-pH}]^2 + 10^{-pk_{a1}^{mix}} 10^{-pk_{a2}^{mix}} 10^{-pk_{a3}^{mix}} 10^{-pH} + 10^{-pk_{a1}^{mix}} 10^{-pk_{a2}^{mix}} 10^{-pk_{a3}^{mix}} 10^{-pk_{a4}^{mix}}} \rightarrow (3)$$

where μ_{PC^+} , μ_{PC^-} , $\mu_{PC^{2-}}$, $\mu_{PC^{3-}}$ were the effective mobility of the corresponding protonated forms, respectively. μ_{eff} can be calculated from migration time of the investigated PC analyte (t_m) and DMSO (t_{EOF}), the marker of Electroosmotic Flow (EOF) [24], shown as Equation 4.

$$\mu_{eff} = \frac{L_t L_{eff}}{U} \left(\frac{1}{t_m} - \frac{1}{t_{EOF}} \right) \rightarrow (4)$$

where L_t (m) was the total capillary length, L_{eff} (m) was the effective capillary length, U was the applied voltage (V).

The thermodynamic acid dissociation constants ($K_{ai}^{25^\circ C}$) were obtained with the correction of the buffer ionic strength at $I=0$ M according to the following Equations 5-7 [25].

$$K_{ai}^{25^\circ C} = \frac{\gamma_{H^+} [H^+] \gamma_{PC^{1-i}} [PC^{1-i}]}{\gamma_{PC^{2-i}} [PC^{2-i}]} \rightarrow (5)$$

Substituting Equation 2 into Equation 5 gives:

$$pK_{ai}^{25^\circ C} = pK_{ai}^{mix} - \log \frac{\gamma_{PC^{1-i}}}{\gamma_{PC^{2-i}}} \rightarrow (6)$$

For ionic strength below 0.2 M, activity coefficients for ions at 25°C can be calculated by Debye-Huckel theory.

$$-\log \gamma = \frac{0.5085z^2 \sqrt{I}}{1 + 1.6405\sqrt{I}} \rightarrow (7)$$

where γ was activity coefficient, z was the charge number of ions. For neutral form, the activity coefficient was assumed to be unity. All terms in brackets were molar concentrations.

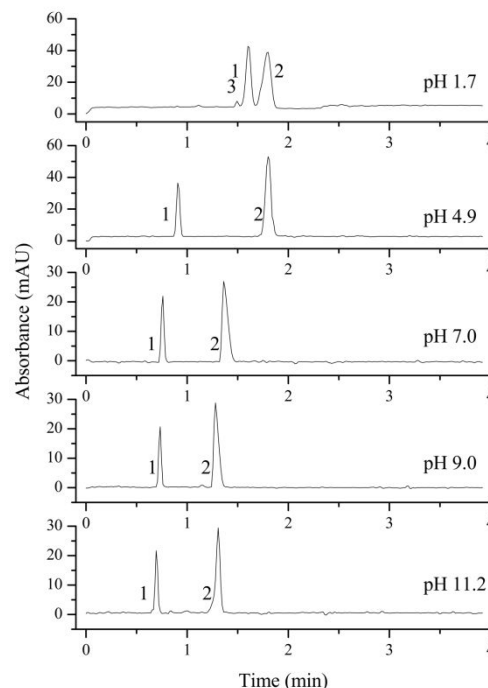


Figure 2. Typical electropherograms at different pH running conditions. The pCE condition is described in section 2.2 and the BGEs information is given in Table 1. 1: EOF marker (DMSO); 2: Phosphocreatine (PC); 3: hydrolysis degradant (Creatine).

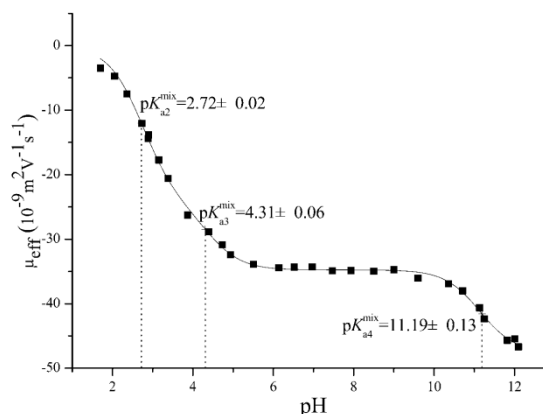


Figure 3. Fitted sigmoidal curve with the effective electrophoretic mobilities of Phosphocreatine (PC) against the pH values of BGEs.

Typical electropherograms were shown as Figure 2 under the developed pCE running conditions. It can be found that an impurity was detected under pH 1.7 and it was confirmed to be

creatine (Figure 1b) by comparing the migration time with that of the standard solution of creatine. However, the existing impurity would not disturb the determination of the pK_a values of the PC analyte. According to Equation 3, the pK_a values were simulated using the measured data of μ_{eff} of the PC analyte (Figure 3). In this study, pK_{a1} for the first degree of the dissociation of phosphate was estimated to be less than 1.70 because of the intrinsic limitation of the CE performance at low pH of BGE condition. The other three thermodynamic pK_a values were listed in Table 2.

Determination of hydrolysis rate constants by the pCE method

In order to assess how the properties of pH-dependent hydrolysis influence on pK_a measurements of PC analyte, it is necessary to conduct kinetic hydrolysis study under acidic pH conditions with the same ionic strength as that of pK_a determination. The typical separation profiles at pH 2.0 at different hydrolysis time were depicted in Figure 4 where the peak area of PC decreased with the hydrolysis time while the peak area of hydrolysis degradant increased correspondingly. The peak area of quinine as the internal standard for the quantitative calibration was almost unchanged suggesting the robust of the pCE running operation. It was assumed that in this hydrolysis reaction, the hydrolysis rate under a given pH only depended on the concentration of PC, thus the hydrolysis of PC would follow pseudo-first order kinetic and the rate constant (k_{obsd}) could be described as Equation 8.

$$\ln \frac{c}{c_0} = -k_{\text{obsd}}t \rightarrow (8)$$

$$\frac{c}{c_0} = \frac{A_{\text{PC}}}{A_{\text{quinine}}} / \frac{A_{\text{PC},0}}{A_{\text{quinine},0}} \rightarrow (9)$$

where k_{obsd} was the observed first order rate constant. c_0 was the initial concentration of PC, c was the concentration of PC at a hydrolysis time t , $A_{\text{PC},0}$, $A_{\text{quinine},0}$ were initial peak areas of PC and quinine, the internal standard for the quantitative calibration at a given pH, respectively. A_{PC} , A_{quinine} were peak areas of PC and quinine at a hydrolysis time t at a given pH, respectively.

According to Equation 8, good pseudo-first order hydrolysis kinetics of PC under acidic conditions was obtained (Figure 5). The corresponding k_{obsd} values at different pH were listed in Table 3. In this study, the k_{obsd} values were approximately half less than those of the reported values at the corresponding pH conditions for the another purpose of assessing the phosphorylation reaction of PC *in vivo* [17], which could be attributed to the lower temperature and lower ionic strength involved on the hydrolysis reactions. It could be confirmed that the analyte of PC possesses the characteristics of pH-dependent hydrolysis property under the conditions of pK_a measurements. The hydrolysis reaction at pH lower than 4.0 was much faster, while as pH increased to 5.0, the hydrolysis rate decreased significantly. The hydrolysis degradation would obviously affect the actual concentration of the analyte of PC, well explaining the variance of published pK_a values using the same

potentiometric method at different laboratories. As pH increased further to be 6.0 or 7.0, the stability of the analyte could be observed with an almost constant concentration level for the analyte of PC during the hydrolysis process concerned, which further suggesting the rational for its injection administration in clinical practice.

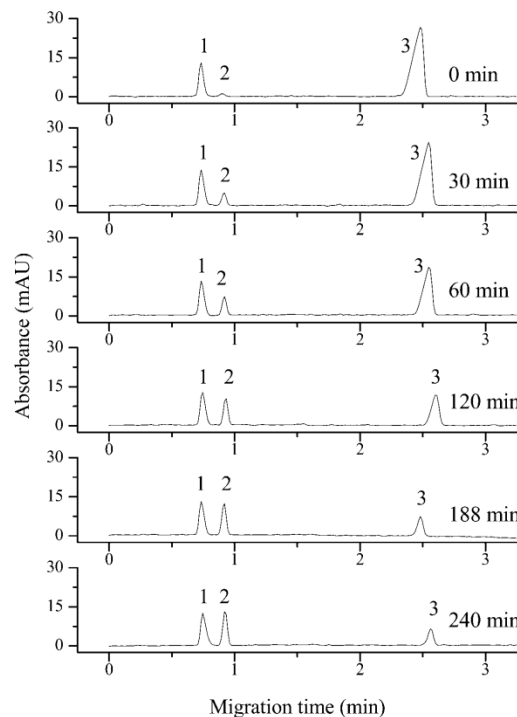


Figure 4. Electropherograms at different hydrolysis time for phosphocreatine hydrolyzed at pH 2.0. The pCE condition was described in section 2.2, the BGE of phosphate buffer solution (pH 7.5) given in Table 1. 1: Internal standard substance (quinine); 2: Hydrolysate (Creatine); 3: Phosphocreatine (PC).

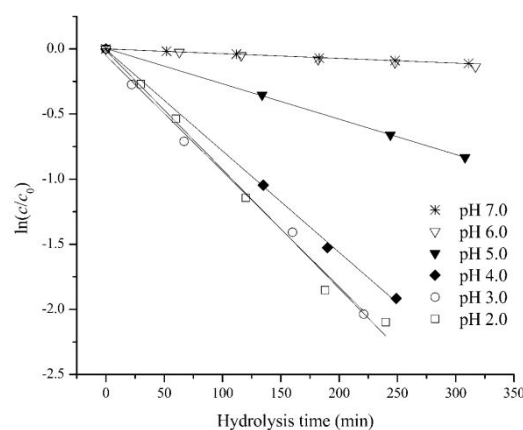


Figure 5. Fitted kinetic hydrolysis curves of phosphocreatine with pH range of 2.0 to 7.0.

Table 1. Background electrolytes preparation.

pH range	Buffer name	Stock solution	Ionic strength (M)
1.7-2.9	Phosphate	0.5 M H_3PO_4	0.025
		0.5 M Tris	

Determination of thermodynamic acidity constants of phosphocreatine and its rate constants of hydrolysis reaction by pressure-assisted capillary zone electrophoresis

2.9-3.9	Formate	0.5 M HCOOH	0.025	7.5-9.5	Borate	0.2 M H ₃ BO ₃	0.025
		0.5 M Tris				0.5 M NaOH	
4.3-5.5	Acetate	0.5 M CH ₃ COOH	0.025	10.3-11.3	CAPS	0.5 M CAPS	0.025
		0.5 M Tris				0.5 M NaOH	
6.0-7.5	Phosphate	0.5 M H ₃ PO ₄	0.025	11.8-12.1	Sodium hydroxide	0.5 M NaOH	0.025
		0.5 M NaOH				0.5 M NaCl	

Table 2. pK_a values determined by pCE method and the comparison with the literature values.

Dissociable group	This study by pCE ^a	Literature values by potentiometry ^a		
	$pK_a^{25^\circ C}$	Meyerhof et al. [17]	Goldberg et al. [18]	Szyfman et al. ^b [19]
First H of P moiety (pK_{a1})	<1.70	<1.9	/	1.86 ± 0.09
Carboxy group (pK_{a2})	2.78 ± 0.02	2.7	3.04	2.12 ± 0.02
Second H of P moiety (pK_{a3})	4.50 ± 0.06	4.5	5.07	4.24
Guanidine (pK_{a4})	11.51 ± 0.13	11.2	10.6	11.04

^aAll the measurements were performed at 25°C. ^bThe pK_a values were determined under I=0.1 M.

Table 3. The hydrolysis kinetic study of regression analysis and the observed first order rate constants at 25°C.

pH	Regression equation	Correlation coefficient	k_{obsd} ($10^{-3}/min^{-1}$)
2	$\ln(c/c_0) = -0.0091t - 0.0123$	0.9962	9.1 ± 0.05
3	$\ln(c/c_0) = -0.0089t - 0.0510$	0.9978	8.9 ± 0.04
4	$\ln(c/c_0) = -0.0078t - 0.0055$	0.9993	7.8 ± 0.02
5	$\ln(c/c_0) = -0.0027t + 0.0015$	0.9999	2.7 ± 0.03
6	$\ln(c/c_0) = -0.0004t - 0.0015$	0.999	0.4 ± 0.01
7	$\ln(c/c_0) = -0.0004t + 0.0004$	0.9991	0.4 ± 0.01

Conclusions

In this study, an optimized pCE method was developed for the determination of pK_a values of phosphocreatine and characterizing its pH-dependent hydrolysis properties, well explaining the variances from different laboratories using the same potentiometric method. It should be more practical using the developed pCE method for accurate pK_a measurements for phosphocreatine overcoming the challenge accompanied with the hydrolysis degradation under acidic conditions.

References

- Kerns EH, Di L. Drug-like properties: concepts, structure design and methods: from ADME to toxicity optimization (1st Ed.). Elsevier Oxford 2008; 48-55.
- Craig CR, Stitzel RE. Modern pharmacology (3rd Ed.). Little, Brown and Company, London 1990; 21-92.
- Babic S, Horvat AJM, Pavlovic DM, Kastelan-Macan M. Determination of pK_a values of active pharmaceutical ingredients. TrAC Trends Anal Chem 2007; 26: 1043-1061.
- Albert A, Serjeant EP. The determination of ionization constant. Chapman and Hall London 1984.
- Avdeef A, Box KJ, Comer JEA, Gilges M, Hadley M, Hibbert C, Patterson W, Tam KY. PH-metric log P 11 pK_a determination of water-insoluble drugs in organic solvent-water mixtures. J Pharm Biomed Anal 1999; 20: 631-641.
- Martinez V, Maguregui MI, Jimenez RM, Alonso RM. Determination of the pK_a values of β -blockers by automated potentiometric titrations. J Pharm Biomed Anal 2000; 23: 459-468.
- Poole SK, Patel S, Dehring K, Workman H, Poole CF. Determination of acid dissociation constants by capillary electrophoresis. J Chromatogr A 2004; 1037: 445-454.
- Zevatskii YE, Samoilov DV, McHedlov-Petrosyan NO. Contemporary methods for the experimental determination of dissociation constants of organic acids in solutions. Russ J Gen Chem 2009; 79: 1859-1889.
- Reijenga J, van Hoof A, van Loon A, Teunissen B. Development of methods for the determination of pK_a values. Anal Chem Insights 2013; 8: 53-71.
- Nowak P, Wozniakiewicz M, Koscielniak P. Application of capillary electrophoresis in determination of acid dissociation constant values. J Chromatogr A 2015; 1377: 1-12.
- Jia ZJ, Ramstad T, Zhong M. Medium-throughput pK_a screening of pharmaceuticals by pressure-assisted capillary electrophoresis. Electrophoresis 2001; 22: 1112-1118.
- Wan H, Holmen A, Nagard M, Lindberg W. Rapid screening of pK_a values of pharmaceuticals by pressure-

- assisted capillary electrophoresis combined with short-end injection. *J Chromatogr A* 2002; 979: 369-377.
13. Wang JL, Xu XJ, Chen DY. Determination of pKa values of a triptolide derivative and its impurities by pressure-assisted capillary electrophoresis. *J Pharm Biomed Anal* 2014; 88: 22-26.
 14. Konasova R, Dyrtrtova JJ, Kasicka V. Determination of acid dissociation constants of triazole fungicides by pressure assisted capillary electrophoresis. *J Chromatogr A* 2015; 1408: 243-249.
 15. Wallimann T, Wyss M, Brdiczka D, Nicolay K, Eppenberger HM. Intracellular compartmentation, structure and function of creatine kinase isoenzymes in tissues with high and fluctuating energy demands: the phosphocreatine circuit for cellular energy homeostasis. *Biochem J* 1992; 281: 21-40.
 16. Strumia E, Pelliccia F, Dambrosio G. Creatine phosphate: pharmacological and clinical perspectives. *Adv Ther* 2012; 29: 99-123.
 17. Wang JL, Xu XJ, Chen DY. Determination of pKa values of a triptolide derivative and its impurities by pressure-assisted capillary electrophoresis. *J Pharm Biomed Anal* 2014; 88: 22-26.
 18. Goldberg RN, Lang BE, Lo C, Ross DJ, Tewari YB. Thermodynamics of the hydrolysis reactions of α -D-galactose 1-phosphate, sn-glycerol 3-phosphate, 4-nitrophenyl phosphate, phosphocreatine, and 3-phospho-D-glycerate. *J Chem Thermodyn* 2009; 41: 654-665.
 19. Szyfman NW, Tenorio T, Ribeiro TS, Felcman J, Merce ALR. Synthesis of novel binary and ternary Zn^{2+} complexes with putrescine and phosphocreatine and the metal complexes study in aqueous solution. *J Mol Struct* 2014; 1074: 467-474.
 20. Vcelakova K, Zuskova I, Kenndler E, Gas B. Determination of cationic mobilities and pKa values of 22 amino acids by capillary zone electrophoresis. *Electrophoresis* 2004; 25: 309-317.
 21. Solínova V, Kasicka V, Koval D, Cesnek M, Holy A. Determination of acid-base dissociation constants of amino- and guanidinopurine nucleotide analogs and related compounds by capillary zone electrophoresis. *Electrophoresis* 2006; 27: 1006-1019.
 22. Aolaanovaj V, Kaajiaka V. Determination of acidity constants and ionic mobilities of polyprotic peptide hormones by CZE. *Electrophoresis* 2013; 34: 2655-2665.
 23. Toshio T, Daichi I, Hitoshi M. Analysis of acid dissociation equilibrium of bupropion by capillary zone electrophoresis after the heat-degradation. *Chromatography* 2016; 37: 105-109.
 24. Takayanagi T, Tabara A, Kaneta T. Determination of Acid dissociation constant of degradable tetrabromophenolphthalein ethyl ester by capillary zone electrophoresis. *Anal Sci* 2013; 29: 547-552.
 25. Lipka E, Folly-Klan M, Charton J, Vaccher MP, Bonte JP, Vaccher C. Determination of pKa values of benzimidazole derivatives from mobility obtained by capillary electrophoresis. *Pharm Biomed Anal* 2010; 53: 1267-1271.

*Correspondence to

Lifeng Chen

Laboratory of Pharmaceutical Analysis

Shanghai Institute of Materia Medica

Chinese Academy of Sciences

University of Chinese Academy of Sciences

PR China