

CT characteristics and diagnostic value of non-small cell lung cancer.

Yan-hua Chen^{1,2*#}, He Zhang^{1,2#}

¹Department of Respiration, Hospital of Traditional Chinese and Western Medicine in Tianjin, PR China

²Department of Oncology, Hospital of Traditional Chinese and Western Medicine in Tianjin, PR China

#These authors contributed equally to this work

Abstract

Objective: To explore the value of Computed Tomography (CT) examination in the diagnosis of non-small cell lung cancer.

Methods: Ninety patients with non-small cell lung cancer in hospital from December 2015 to 2016 December were divided into observation group and control group. CT examination was used in observation group and tumor marker, TM (TM) detection was used in control group. Diagnosis rate and patient satisfaction were compared between two groups.

Results: The inspection result showed observation group had a significantly higher diagnose accordance rate of non-small cell lung cancer than control group (88.9% vs. 60.0%, $P<0.05$). Diagnostic survey indicated that had a significantly higher patient satisfaction than control group ($P<0.05$). The comparison between Observation group and control group for planar CT values of non-small cell lung cancer shows significant difference ($P<0.05$)

Conclusion: CT detection method can effectively improve the detection accuracy and patient satisfaction of non-small cell lung cancer. Therefore, it is worthy of promotion and application in clinical diagnosis.

Keywords: Non-small cell lung cancer, CT, TM detection.

Accepted on July 14, 2017

Introduction

With the continuous improvement of living standards, the incidence of lung cancer is also rising. As a common respiratory disease, lung cancer has the highest incidence in various clinical malignancies, becoming a serious threat to the patient's life and health. Therefore, the timely detection of lung cancer, effective analysis of pathology and appropriate treatment are important ways to improve the survival rate of patients [1]. In clinical medicine, lung cancer is divided into non-small cell cancer and small cell cancer, of which non-small cell lung cancer is more common with an incidence 4 times of small cell lung cancer. At present, it is believed that imaging diagnosis and TM detection are the main means of early detection of lung cancer [2]. In order to explore the difference between CT and TM diagnosis, we selected patients with Non-Small Cell Lung Cancer (NSCLC) in our hospital from December 2015 to December 2016. The patients were examined by CT and TM for the comparison of the diagnosis effects.

Materials and Methods

General information

Ninety patients with non-small cell lung cancer in hospital of traditional Chinese and Western Medicine in Tianjin from December 2015 to December 2016 were randomly selected and randomly divided into observation group and control group, 45 patients each group. There were 54 males and 63 females in observation group, 24-69 years, mean age (43.3 ± 7.8 y). All these patients were diagnosed as non-small cell lung cancer by percutaneous biopsy or breast hydrocytology examination; among them, 54 cases were adenocarcinoma, and 36 cases were squamous carcinoma. They were randomly divided into observation group and control group, with 45 cases for each group. There were 28 males and 17 females in observation group, 24-66 y, mean age (44.5 ± 7.2 y). 38 patients (84.4%) had smoking history, 26 patients (57.8%) adenocarcinoma, and 19 patients (42.26%) squamous cell carcinoma. There were 26 males (57.8%) and 19 females (42.26%) in control group, 25-69 y, mean age (45.6 ± 6.8 y). 39 patients (86.7%) had smoking history, 28 patients (62.2%) adenocarcinoma, and 17 patients (37.8%) squamous cell carcinoma. The clinical manifestations of patients included chest pain, cough, hemoptysis, fever, shortness of breath and so on. This study was approved by the Ethics Committee of our hospital. The

informed consent documents were signed by all these patients. The clinical data of the two groups of patients showed that

patients had no significant difference ($P>0.05$) in age, sex, disease and other basic conditions, as shown in Table 1.

Table 1. Comparison of general information from 2 groups.

Groups	Cases	Age	Smoking history (Case/%)	Types of lung cancer (Case/%)	
				Adenocarcinoma	Squamous carcinoma
Observation group	45	24-66	38 (84.4%)	39 (86.7%)	19 (42.2%)
Control group	45	25-69	39 (86.7%)	28 (62.2%)	17 (37.8%)
P	>0.05			>0.05	>0.05

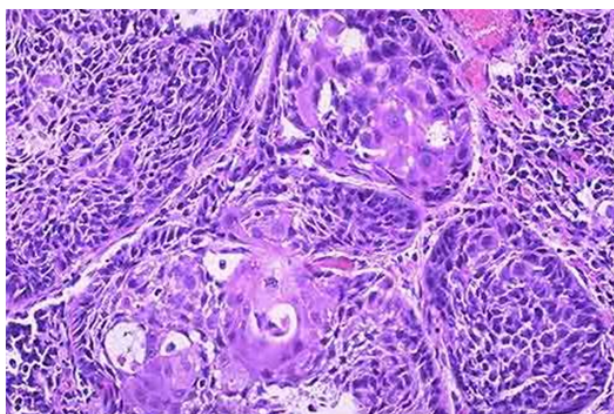


Figure 1. Non-small cell lung cancer pathology.

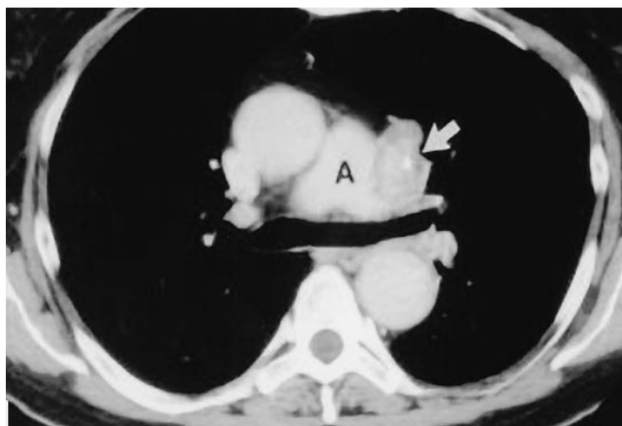


Figure 2. Non-small cell lung cancer pathology imaging.

Methods

CT examination: Patients in observation group were examined by a Siemens Emotion spiral CT scanner (Siemens from Germany, 16 rows) with a pitch of 1.5, 130 kV, 130 mA, 1.5 s. Layer thickness was 8 mm and layer spacing is 8 mm. before the beginning, patient needed a deep inspiratory for scanning from the tip of the lung to the diaphragm angle in the lesion area (3×5 mm thin layer scan) (Figures 1 and 2). The implementation of the scan required more than three senior practitioners to perform in order to improve the accuracy of reading film.

Determination of serum TM: The venous blood of patients was taken in the morning for determination of serum TM. The keratin 19 fragment (CYFRA21-1) was detected by Immunoradiometric Method (IRMA method) based on chemiluminescence method. The serum Carcinoembryonic Antigen (CEA) was determined, which positive standard CYFRA21-1 >3.3 ng/ml, CEA $>$ ng/ml.

Evaluation criteria

Coincidence rates of two detection methods in diagnosis of non-small cell lung cancer (%): Coincidence rates of in diagnosis of non-small cell lung cancer (%)=(Coincidence cases in diagnosis of adenocarcinoma+Coincidence cases in diagnosis of squamous carcinoma)/total number $\times 100\%$ [2].

Statistical processing

SPSS17.0 statistical software was used in analysis of data and t test was used for count data, described as ($\bar{x} \pm s$). In Chi-square test, $P<0.05$ was defined as a significant difference.

Results

Comparison of the coincidence rates of two detection methods in diagnosis of non-small cell lung cancer

Table 2 shows that observation group has a significantly higher coincidence rate than that of control group (88.9% vs. 60.0%, $P<0.05$).

Lesion enhancement degree and pathological type

There was significant difference between the mean CT values of non-small cell lung cancer between groups ($P<0.05$, Table 3).

Discussion

Lung is an organ where primary cancer and cancer cell metastasis are prone to occur [2]. Lung cancer is a common respiratory disease in clinic, and it has poor prognosis. Studies have shown that timely and accurate treatment program on non-small cell lung cancer could effectively enhance the prognosis [3]. However, the timely diagnosis of lung cancer was not common in medical profession, which was realized

only after the emergence of the relevant symptom. Previous cases of suspected primary lung cancer were diagnosed by traditional X-ray examination. Although the operation of X-ray chest radiograph was simple and convenient, but because of its high rate of missed diagnosis, therefore, the credibility of clinical diagnosis was low [4]. The incidence of primary lung cancer was increasing year by year. At present, the inducement mechanism was not clear, and some scholars pointed out that it may be related to genetic factors, hormone levels, and long-term radiation there [5,6]. The traditional color Doppler ultrasound remained the major diagnosis that could clearly observe the tumor location, echo and blood flow. However, restricted by the low resolution, this diagnosis had low diagnostic rate of tumor with smaller diameter, which resulted in high risk of misdiagnosis [7].

With the continuous development of medical research and clinical treatment level, multi-slice spiral CT imaging diagnosis technology is widely used in clinical diagnosis of malignant tumors [8]. Multi-slice spiral CT could make three-dimensional observation and analysis on morphological findings of the lesion in patients with primary cancers through multiple layers observation and planar reconstruction function. In the actual inspection process, multi-slice spiral CT could achieve a comprehensive analysis on the lesion density, size, location, number, shape, edge, the surrounding details and the internal structure, which not only improve the detection rate,

but also reduce the rate of misdiagnosis. In other words, this technique provided substantial basis for the diagnosis and treatment of primary lung cancer patients [9,10]. With the development of clinical diagnosis and treatment technology, CT was gradually applied to the clinical examination of primary lung cancer. The inspection method had characteristics of simple operation, repeatability, high accuracy and low interference during the peripheral vascular scan [11]. With the development of imaging technology, CT diagnosis technology has been improved, which was able to quantify the concentration of the base material, greatly improving the accuracy of the diagnosis and providing basis for lung cancer diagnosis [12]. In the course of the test result comparison, it was found that the coincidence rate in CT group was 88.9%, which was significantly higher than that of the control group (60.0%). Besides, the satisfaction rate of the patients in CT group was also significantly higher than that in the control group. Sun Hu pointed out that CT test coincidence rate was significantly higher than TM detection coincidence rate in his work CT Joint TM Determination of Value in the Diagnosis of Non-Small Cell Lung Cancer. Obviously, the result of this study had the similar conclusions.

In summary, the use of CT detection as a non-small cell lung cancer detection method had high diagnostic value and patient satisfaction rate. It is worthwhile to be popularized in clinical practice.

Table 2. Comparison of the two test methods in diagnosis of non-small cell lung cancer (n (%)).

Groups	Cases	Adenocarcinoma	Squamous carcinoma	Coincidence rate
Observation group	45	23	17	40 (88.9%)
Control group	45	23	7	27 (60.0%)
P	<0.05			

Table 3. Lesion enhancement degree and pathological type ($\bar{x} \pm s$).

Groups	Pathological type		
	Adenocarcinoma (n=54)	Squamous (n=36)	carcinoma
Control group	41.45 ± 4.24	39.57 ± 3.98	
Observation group	57.22 ± 6.82	55.97 ± 7.14	
t	5.795	5.748	
P	<0.05	<0.05	

References

- Zhou YL. Clinical value of 18F-FDG PET-CT imaging in the preoperative diagnosis and staging of regional lymph nodes in non-small cell lung cancer. Chin J CT MRI 2014; 3: 70-74.
- Sun H. Value of CT combined with TM detection in diagnosis of non-small cell lung cancer. J Hainan Med Univ 2015.

- Zhao JR, Wen Z. Diagnostic value of multi-slice spiral CT in non-small cell lung cancer preoperative TNM staging. Chin J Med Imag 2015; 9: 682-685.
- Zhang LP, Wang RW. Value of 18F-FDG PET/CT for diagnosis of lymphatic metastasis in patients with non-small cell lung cancer. Jreg Anat Oper Surg 2016; 3: 184-187.
- Choi BI. Detection of hypervascular nodular hepatocellular carcinomas: value of triphasic helical CT compared with iodized-oil CT. Am J Roentgenol 2013; 168: 219-224.
- Khan MA. Positron emission tomography scanning in the evaluation of hepatocellular carcinoma. J Hepatol 2000; 32: 792-797.
- Yang H, Luo S. Six kinds of tumor markers in diagnosis of lung cancer and its clinical application value. Mod Oncol 2016; 4: 577-581.
- Chen C. Analysis of the value of multi-slice spiral CT in the screening of high-risk lung cancer and its imaging findings. Chinese J CT MRI 2016; 2: 42-44.

9. Izzard AS. Small artery structure and hypertension: adaptive changes and target organ damage. *J Hypertens* 2005; 23: 247-250.
10. Harred JF, McIntyre JS. Dow chemical company assignee eXpoXidation process. *US Patent* 2012; 3: 1927-1904.
11. Nicolls MR, Haskins K, Flores SC. Oxidant stress, immune dysregulation, and vascular function in type I diabetes. *Antioxid Redox Signal* 2007; 9: 879-889.
12. Liu Q. Value of spiral CT in the diagnosis of 102 patients with lung cancer. *Chinese J CT MRI* 2015; 2: 21-23.

***Correspondence to**

Yan-hua Chen

Department of Respiration

Hospital of Traditional Chinese and Western Medicine

PR China