

Assessment of serum selenium binding protein-1 level in patients with chronic kidney disease: its relation to the renal function and the associated risk factors.

Sazan D. Saeed¹, Ansam N. Al-Hasani², Marwan S. Al-Nimer^{2,3*}

¹Department of Pharmacology and Toxicology, College of Pharmacy, Hawler Medical University, Erbil, Iraq

²Department of Clinical Pharmacology, College of Pharmacy, Hawler Medical University, Erbil, Iraq

³Department of Dentistry, AL-Rafidain University College, Baghdad, Iraq

Abstract

Selenium-binding protein 1 (SBP-1) is a 56 kD cytosolic protein bound to selenium by selenosulfide covalent bond. It enhances the production of reactive oxygen species and aggravates the oxidative stress. Significant high urinary levels observed in acute kidney injury. This cross-sectional observational study aimed to assess the clinical significant of determining the serum level of SBP-1 in patients with chronic kidney disease (CKD). A total number of 125 patients with established CKD, and 30 healthy subjects were recruited from Rizgary Teaching Hospital in Erbil-Iraq from January to August 2018. Anthropometric, blood pressure, and estimated glomerular filtration rate (eGFR) were determined. Serum SBP-1 was determined by using enzyme linked immunoassay technique. The mean \pm SD of serum SBP-1 level was significantly ($p < 0.001$) higher in CKD than the corresponding level of healthy subjects (2009 ± 857.4 vs. 920.6 ± 288.3 pg/ml), respectively. Significant positive correlation between eGFR with serum level of SBP-1 ($r = 0.188$, $p = 0.036$) was observed. Receiving operating characteristics test shows that the area under the curve of the waist to height ratio was significantly high at a cut-off value of SBP-1 is 1500 pg/ml. The sensitivity, the specificity, and the positive predictive value of this discriminator were 61.6%, 100%, and 77%, respectively. We conclude that serum SBP-1 significantly correlates with eGFR, and it is a useful discriminator of cardiovascular events that represented by a significant the area under the curve of waist to height ratio.

Keywords: Selenium binding protein-1, Chronic kidney disease, Estimate glomerular filtration rate.

Accepted on November 21, 2018

Introduction

Selenium-binding protein-1 (SBP-1, or hSP56 or SBP56) is a 56 kD cytosolic protein and heavily tyrosine-phosphorylated that bound to selenium by selenosulfide covalent bond [1]. It acts as membrane traffic but it does not act as a transmembrane protein [2,3]. It is expressed in all over the body, but its expression in the lung, liver and kidney was higher than other tissues [4,5]. Its role in the selenium metabolism is still unknown, and there is no evidence that it plays a role in the selenium delivery. Some authors believed that selenium itself can induce expression and increasing the levels of SBP-1. Its pharmacological action including suppression of the tumorigenesis in the different organs and it progressively decreased during the development of the cancer [6-10]. SBP-1 is a target of the progression tumor factor called a hypoxia inducing factor-1 α (HIF-1 α) [11]. Its levels increased in the psychotic illnesses e.g. schizophrenia and autoimmune eye disease e.g., spontaneous equine recurrent uveitis [12,13]. There is an inverse relationship between SBP-1 and

selenoenzyme glutathione peroxidase-1 (GPx1); it means SBP-1 specifically reduced the activity of GPx1 [14]. There is an interaction between oxidative stress syndrome and SBP-1. Hypoxia induces overproduction of reactive oxygen species (ROS) and expression of HIF-1 α which in turn facilitates the expression of SBP-1. On that occasion the SBP-1 counteracts the activity of GPx1 leading to a further increase levels of ROS [15]. In chronic kidney disease (CKD), generation of (ROS) were increased, and a hemodialysis as a part of management of uremia is contributed in a further production of ROS and a reduction in the antioxidant activity [16,17]. In CKD, the extracellular glutathione peroxidase (a selenoprotein antioxidant) notably GPx3 is deficient [18]. Therefore, the circulating level of SBP-1 does not act in this GPx. Recent experimental study demonstrates a significant increase of urinary excretion of SBP-1 with a significant the area under the curve compared with serum creatinine (SCr) or blood nitrogen urea (BNU) in acute kidney injury-model [19]. This cross-sectional observational study aimed to evaluate the clinical

significant of determining the serum level of SBP-1 in CKD patients, and to relate its level to the other indices.

Materials and Methods

Ethical approval and consent to participate

The Institutional Scientific Committee at the Hawler Medical University approved this study taking in consideration the guidelines of the Helsinki. According to the guidelines, any drug or device used in this study should be harmless, and the patient is free to withdraw from the study at any time. Patients who were willing to enrol in this study signed a consent form at a time of entry into the study.

Setting

This cross-sectional study was done in the Department of Pharmacology and Toxicology at the Hawler Medical University in Kurdistan region-Iraq from January to August 2018. The patients were recruited from the Unit of Dialysis at the Rizgary Teaching Hospital in Erbil-Iraq. Eligible patients were both genders of whatever age. The criteria of inclusion were known cases of chronic kidney disease of whatever etiological causes that referred to the hemodialysis. Patients with chronic renal failure due to terminal illness, intoxication with heavy metals, abnormal electrolytes levels, and complicated pregnancy were excluded from the study.

Sample size estimation

The sample size was calculated by using margin of errors ($\alpha=0.05$, $\beta=0.2$), two tails and 95% confidence interval. Therefore, the sample size is $=1+2C \times (\text{Standard deviation/difference between means})^2$, where C represents the constant value that derived from the statistical tables and it equals to 7.85 when the $1-\beta=0.8$ and $\alpha=0.05$.

A total number of 125 patients (66 men and 59 women) diagnosed as chronic kidney disease and 30 healthy subjects (16 men and 14 women) were enrolled in the study.

Clinical assessment

The authors interviewed each patient and obtained a demographic and illness history. Anthropometric measurements including the height (m); weight (kg) and waist circumference (cm). A waist circumference of ≥ 80 cm (women) and ≥ 90 cm (men) indicating the presence of central obesity. The body mass index (BMI) was calculated according to the Quetlet's equation:

$$\text{BMI (kg/m}^2\text{)} = \text{Weight (kg)} / \text{Height}^2 \text{ (m)}$$

Waist height ratio (WHeR) was calculated by dividing the waist (cm) over height (cm) and a value of ≥ 0.5 indicates that the subject is at risk of cardiovascular events. The blood pressure (mmHg) was measured on sitting position and the mean of three readings was taken. The difference between systolic and diastolic blood pressure represented the pulse

pressure, and the mean arterial blood pressure is equal to diastolic blood pressure + $(1/3 \times \text{pulse pressure})$.

Venous blood samples drew from the patients, the sera separated by centrifugation (3,000 rpm for 15 min) for determination of the Blood Urea Nitrogen (BUN), Serum Creatinine (Scr), and SBP-1. Estimated glomerular filtration rate (eGFR) was calculated by using the Cockraft and Gault equation adjusted to the body surface area (ml/min/m^2), and 4 variable modified diet in renal disease (4 v MDRD) equation (ml/min/1.73 m^2). Serum creatinine, BNU and electrolytes were determined in the laboratory of the hospital as routine investigations. Serum SBP-1 level was measured by using the ELISA technology according to the instruction of the manufacturer.

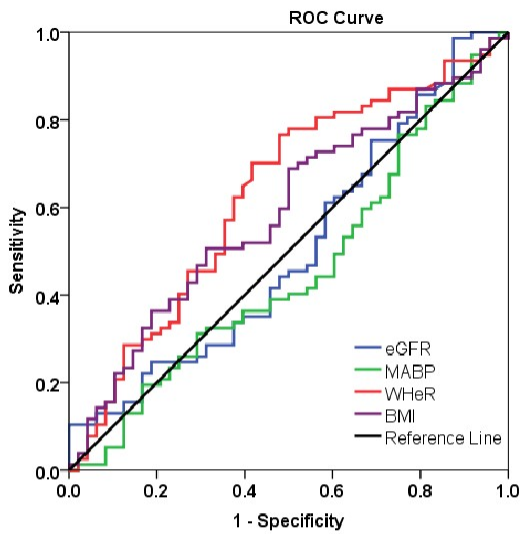
Statistical analysis

Statistical analyses were performed using SPSS version 20.0 and Excel 2003 program for Windows. The results were provided number, percentage and as mean \pm SD. Two-tailed independent two samples were used to compare between healthy subjects and patients with CKD. The area under the curve with 95% confidence intervals, sensitivity, specificity, and positive predictive value were determined taking the SBP-1 as a discriminator at the cut-off value of 1500 pg/ml. The differences were considered statistically significant when $p \leq 0.05$.

Results

Table 1 shows the characteristic features of participants enrolled in the study. The mean \pm SD of age was 55.8 ± 12.9 y. Chronic pyelonephritis represented the most frequent cause of CKD which found in 39 patients, while hypertension is the general associated disease which present in 84 patients. More than one comorbidities was present in the patients. Family history of renal diseases was detected in 15.2% of patients (Table 1). Elevated blood pressure was found in different profiles as shown in Table 2. The mean blood pressure of patients with combined systolic and diastolic high blood pressure was 176.2 ± 20.8 mmHg ($n=50$). The mean \pm SD of the BMI was 26.7 ± 5.3 kg/m^2 , and the WHeR was 0.588 ± 0.083 . The mean values of BUN and Scr were 140.2 mg/dl and 6.14 mg/dl, respectively (Table 3). Estimated GFR using Cockraft and Gault equation adjusted to the body surface area and 4v-MDRD equation were 7.70 ± 3.19 and 8.74 ± 4.12 ml/min/m^2 , respectively (Table 3). The mean \pm SD of serum SBP-1 in CKD patients was significantly ($p < 0.001$) higher than the corresponding value of healthy subjects (2009 ± 857.4 vs. 920.6 ± 288.3 pg/ml), respectively. A significant positive correlation between eGFR (calculated by 4v-DMRD) and serum levels of SBP-1 ($r=0.188$, $p=0.036$, $df=123$). Receiving operating characteristics test shows that the area under the curve of WHeR was significantly high taking the cut-off value of SBP-1 is 1500 pg/ml (Figure 1). The sensitivity, the specificity, and the positive predictive value of this discriminator were 61.6%, 100%, and 77%, respectively (Figure 1).

Assessment of serum selenium binding protein-1 level in patients with chronic kidney disease: its relation to the renal function and the associated risk factors



Variables	AUC	95% C.I.	p-value
eGFR	0.505	0.339-0.611	0.925
MABP	0.457	0.352-0.562	0.417
WHeR	0.630	0.527-0.732	0.015
BMI	0.591	0.490-0.693	0.086

Figure 1. Area under the curve and 95% confidence interval of the eGFR, MABP, WHeR, and BMI taking the SPBI as a discriminator with a cut-off value of 1500 pg/ml. The sensitivity is 61.6% and the specificity is 100%, and a positive predictive value is 77%. eGFR: Estimated glomerular filtration rate (ml/min/m²), ABP: Mean arterial blood pressure (mmHg), WHeR: Waist to height ratio, BMI: Body mass index.

Table 1. Characteristics of the participants enrolled in the study.

Variables	Results
Gender (Female: male)	59:66
Age (y)	
Total	55.8 ± 12.9
Female	54.7 ± 13.9
Male	56.0 ± 16.6
Family history of renal diseases	19 (15.2)
Causes of renal failure	
1. Renal:	
Chronic pyelonephritis	39 (31.2)
Chronic glomerulonephritis	06 (4.8)
Analgesic induced nephropathy	03 (2.4)
Bladder diseases	03 (2.4)
Renal cyst	03 (2.4)
2. Extra-renal	
Diabetes mellitus	53 (42.4)

Hypertension	84 (67.2)
Preeclampsia	04 (3.2)
Trauma	01 (0.8)
Shock	01 (0.8)
Connective and rheumatic diseases	04 (3.2)
3. No identified cause	04 (3.2)

The results are expressed as number (percentage) and mean ± SD of number of the participants (n=125).

Table 2. Baseline of the blood pressure and anthropometric measurements.

Blood pressure (mmHg)	Data results
Normotensive	27 (21.6)
Systolic ≤ 139 mmHg	73 (58.4)
Diastolic ≤ 90 mmHg	25 (20)
Both systolic ≤ 139 mmHg and diastolic ≤ 90 mmHg	125.5 ± 11.9
Systolic	71.5 ± 11.6
Diastolic	54.0 ± 12.3
Pulse	89.3 ± 10.2
Mean	
Hypertensive (isolated or combined)	
Systolic ≥ 139 mmHg	98 (78.4)
Diastolic ≥ 90 mmHg	52 (41.6)
Isolated hypertensive (either systolic or diastolic)	50 (40)
Systolic	161.3 ± 19.7
Diastolic	79.5 ± 6.7
Pulse	81.8 ± 20.9
Mean	106.5 ± 7.8
Both systolic ≥ 139 mmHg and diastolic ≥ 90 mmHg	50 (40)
Systolic	176.2 ± 20.8
Diastolic	102.6 ± 14.6
Pulse	73.6 ± 19.2
Mean	126.9 ± 14.3
Body mass index (kg/m ²)	26.7 ± 5.3
Waist circumference (cm)	94.4 ± 13.6
Waist to height ratio	0.588 ± 0.083

The results are expressed as number (percentage) and mean ± SD of number of participants (n=125).

Table 3. Renal function tests.

Renal function indices	Total
Blood urea nitrogen (mg/dl)	140.2 ± 55.2

Serum creatinine (mg/dl)	6.14 ± 2.53
Estimated glomerular filtration rate (Cockraft and Gault): (ml/min)	13.53 ± 6.17
Estimated glomerular filtration rate (Cockraft and Gault): (ml/min/BSA (m ²))	7.70 ± 3.19
Estimated glomerular filtration rate (4 v MDRD): (ml/min/1.73 m ²)	8.74 ± 4.12
The results are expressed as mean ± SD.	

Discussion

The results of this study showed that the serum level of SBP-1 was significantly increased by 2.18 folds of health subjects, and it is a significant discriminator of WHeR in patients with CKD at a cut-off of 1500 pg/ml. Chronic pyelonephritis *per se* or combined with other causes was the major predisposing cause of CKD. This observation is in agreement with other studies that parenchymal scarring and pyelonephritis were common findings in the nephrectomy specimens [20]. The higher percentage of diabetes mellitus that reported in this study explained the significant percentage of chronic pyelonephritis as an etiological cause of CKD [21]. The majority of patients had elevated blood pressure which may be a cause or the late sequel of CKD. Calcification of the renal arteries or ageing led to high blood pressure, decrease GFR and thereby CKD [22]. The prevalence of uncontrolled elevated blood pressure is frequently observed in CKD as this study found that 50 patients had both systolic and diastolic high blood pressure [23]. The mean values of the body mass index and waist circumference were 26.7 kg/m² and 94.4 cm indicating that the patients represent over-weight with central obesity. This observation is in agreement with other studies that showed central obesity is a frequent observation in CKD [24]. Significant high WHeR which exceeded 0.5 indicates that the patients are at risk of cardiovascular events. Recent studies demonstrate that children with CKD gain a significant value of WHeR and prone to cardiovascular events [25]. Estimated glomerular filtration rate was determined by following three formulas and the results were comparable and indicate that the patients were at Grade 5 CKD or renal failure. A significant extraordinary mean value of SBP-1 in patients with CKD is a novel observation that did not mention in the literatures. Recent review highlights SBP-1 as a useful marker to detect acute kidney injury [26]. Deficiency of glutathione peroxidase in CKD which counteracts the SBP-1 may explain the significant elevated level of SBP-1 [27]. This study demonstrates a significant increase of eGFR with SBP-1 which may suggest the effect of SBP-1 on the vascular smooth muscle. It is necessary to mention that the limits of eGFR were narrow which may not be precisely indicated that SBP-1 dilates the blood vessel. The results that obtained by receiving operating characteristics indicate that a cut-off value of ≥ 1500 pg/ml significantly discriminates the CKD patients with a high WHeR. This observation highlights the importance of

determination of the SBP-1 because it can predict the risk factors of cardiovascular events. One of the limitations of the study represents the measurement of glutathione peroxidase which is missed to exclude the action of SBP-1 on the generation of ROS. We conclude that determination of SBP-1 is a useful marker of deterioration of renal function as it significantly and positively correlates with estimated glomerular filtration rate. A cut-off value of 1500 pg/ml can serve as a discriminator of cardiovascular events in chronic kidney disease by the evidence of a significant the area under the curve of waist to height ratio which is a risk factor of cardiovascular events.

Acknowledgement

The authors appreciate the Faculty of Pharmacy, Hawler Medical University for giving us the opportunity to complete this study.

Author's Contribution

S.D.S: Acquisition of data, revising the article critically for important intellectual content, final approval of the version to be published. A.N.Al-H: Acquisition of data, revising the article critically for important intellectual content, Final approval of the version to be published. M.S.Al-N: concept and design of study, analysis and interpretation of data, drafting the article, Final approval of the version to be published.

References

1. Torrealba JR, Colburn M, Golner S, Chang Z, Scheunemann T, Fechner JH, Roenneburg D, Hu H, Alam T, Kim HT, Kanmaz T, Oberley T, Knechtle SJ, Hamawy MM. Selenium-binding protein-1 in smooth muscle cells is downregulated in a rhesus monkey model of chronic allograft nephropathy. *Am J Transplant* 2005; 5: 58-67.
2. Porat A, Sagiv Y, Elazar ZA. 56 kDa selenium-binding protein participates in intra-Golgi protein transport. *J Biol Chem* 2000; 275: 14457-14465.
3. Bansal MF, Mukhopadhyay T, Scott J, Cook RG, Mukhopadhyay R, Medina D. DNA sequencing of a mouse liver protein that binds selenium: implications for selenium's mechanism of action in cancer prevention. *Carcinogenesis* 1990; 11: 2071-2073.
4. Chang PW, Tsui SK, Liew C, Lee CC, Waye MM, Fung KP. Isolation, characterization, and chromosomal mapping of a novel cDNA clone encoding human selenium binding protein. *J Cell Biochem* 1997; 64: 217-224.
5. Lanfear J, Fleming J, Walker M, Harrison P. Different patterns of regulation of the genes encoding the closely related 56-kDa selenium- and acetaminophen-binding proteins in normal tissues and during carcinogenesis. *Carcinogenesis* 1993; 14: 335-340.
6. Silvers AL, Lin L, Bass AJ, Chen G, Wang Z, Thomas DG, Lin J, Giordano TJ, Orringer MB, Beer DG, Chang AC. Decreased selenium-binding protein 1 in esophageal adenocarcinoma results from posttranscriptional and

- epigenetic regulation and affects chemosensitivity. *Clin Cancer Res* 2010; 16: 2009-2021.
7. Zhang S, Li F, Younes M, Liu H, Chen C, Yao Q. Reduced selenium-binding protein 1 in breast cancer correlates with poor survival and resistance to the anti-proliferative effects of selenium. *PLoS One* 2013; 8: e63702.
 8. Yang M, Sytkowski AJ. Differential expression and androgen regulation of the human selenium-binding protein gene hSP56 in prostate cancer cells. *Cancer Res* 1998; 58: 3150-3153.
 9. He QY, Cheung YH, Leung SY, Yuen ST, Chu KM, Chiu JF. Diverse proteomic alterations in gastric adenocarcinoma. *Proteomics* 2004; 4: 3276-3287.
 10. Sawiris GP, Sherman-Baust CA, Becker KG. Development of a highly specialized cDNA array for the study and diagnosis of epithelial ovarian cancer. *Cancer Res* 2002; 62: 2923-2928.
 11. Scortegagna M, Martin RJ, Kladney RD, Neumann RG, Arbeit JM. Hypoxia-inducible factor-1 α suppresses squamous carcinogenic progression and epithelial-mesenchymal transition. *Cancer Res* 2009; 69: 2638-2646.
 12. Yao Y, Schroder J, Karlsson H. Verification of proposed peripheral biomarkers in mononuclear cells of individuals with schizophrenia. *J Psychiat Res* 2008; 42: 639-643.
 13. Kanazawa T, Glatt SJ, Faraone SV, Hwu HG, Yoneda H, Tsuang MT. Family-based association study of SELENBP1 in schizophrenia. *Schizophr Res* 2009; 113: 268-272.
 14. Fang W, Goldberg ML, Pohl NM, Bi X, Tong C, Xiong B, Koh TJ, Diamond AM, Yang W. Functional and physical interaction between the selenium-binding protein 1 (SBP1) and the glutathione peroxidase 1 selenoprotein. *Carcinogenesis* 2010; 31: 1360-1366.
 15. Wu M, Kang MM, Schoene NW, Cheng WH. Selenium compounds activate early barriers of tumorigenesis. *J Biol Chem* 2010; 285: 12055-12062.
 16. Witko Sarsat V, Friedlander M, Capeillere Blandin C, Nguyen-Khoa T, Nguyen AT, Zingraff J, Jungers P, Descamps-Latscha B. Advanced oxidation protein products as a novel marker of oxidative stress in uremia. *Kidney Int* 1996; 49: 1304-1413.
 17. Epperlein MM, NouroozZadeh J, Jayasena SD, Hothersall JS, Noronha-Dutra A, Neild GH. Nature and biological significance of free radicals generated during bicarbonate hemodialysis. *J Am Soc Nephrol* 1998; 9: 457-463.
 18. Pang P, Abbott M, Abdi M, Fucci QA, Chauhan N, Mistri M, Proctor B, Chin M, Wang B, Yin W, Lu TS, Halim A, Lim K, Handy DE, Loscalzo J, Siedlecki AM. Pre-clinical model of severe glutathione peroxidase-3 deficiency and chronic kidney disease results in coronary artery thrombosis and depressed left ventricular function. *Nephrol Dial Transplant* 2018; 33: 923-934.
 19. Kim KS, Yang HY, Song H, Kang YR, Kwon J, An J, Son JY, Kwack SJ, Kim YM, Bae ON, Ahn MY, Lee J, Yoon S, Lee BM, Kim HS. Identification of a sensitive urinary biomarker, selenium-binding protein 1, for early detection of acute kidney injury. *J Toxicol Environ Health A* 2017; 80: 453-464.
 20. Noroozinia F, Makhdoomi K, Behnamfard H, Mohammadi S, Dindarian S, Bagheri M, Mohammadi H. The pathological evaluation of nonneoplastic kidney disorder in tumor nephrectomy specimens. *Saudi J Kidney Dis Transpl* 2018; 29: 586-590.
 21. Enshaei A, Boora AA, Taheri D, Changizi Z, Bahmani N. Focal xanthogranulomatous pyelonephritis with pulmonary lesions on the background of type two diabetes mellitus. *Case Rep Radiol* 2018; 2018: 1698286.
 22. Phan O, Burnier M, Wuerzner G. Hypertension in chronic kidney disease-role of arterial calcification and impact on treatment. *Eur Cardiol* 2014; 9: 115-119.
 23. Zheng Y, Tang L, Zhang W, Zhao D, Zhang D, Zhang L, Cai G, Chen X, Patriotic Collaborative Group. Applying the new intensive blood pressure categories to a nondialysis chronic kidney disease population: the prevalence, awareness and treatment rates in chronic kidney disease patients with hypertension in China survey. *Nephrol Dial Transplant* 2018.
 24. Dierkes J, Dahl H, Lervaag Welland N, Sandnes K, Sæle K, Sekse I, Marti HP. High rates of central obesity and sarcopenia in CKD irrespective of renal replacement therapy-an observational cross-sectional study. *BMC Nephrol* 2018; 19: 259.
 25. Sgambat K, Roem J, Mitsnefes M, Portale AA, Furth S, Warady B, Moudgil A. Waist-to-height ratio, body mass index, and cardiovascular risk profile in children with chronic kidney disease. *Pediatr Nephrol* 2018.
 26. Beker BM, Corleto MG, Fieiras C, Musso CG. Novel acute kidney injury biomarkers: their characteristics, utility and concerns. *Int Urol Nephrol* 2018; 50: 705-713.
 27. Wong FN, Tan JA, Keng TC, Ng KP, Chua KH, Kuppusamy UR. Association between plasma soluble RAGE and renal function is unaffected by medication usage and enzymatic antioxidants in chronic kidney disease with type 2 diabetes. *Clin Chim Acta* 2016; 453: 56-61.

***Correspondence to**

Marwan S. Al-Nimer
Hawler Medical University
Erbil
Iraq